



Mercer+Mettle™ Faïlle Soft Shell MM7100



For rain-repelling and work-life blending, this shell has a refined, easy-moving shape and technical DWR-finished fabric. Reverse coil zip pockets keep essentials dry, safe and in place while the black, oxidized molded zipper extends through the collar.

Fabric+Weight

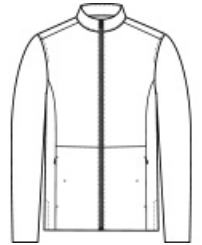
- 77/23 nylon/spandex bonded to a water-resistant film insert and 100% polyester jersey lining
- 5K/5K waterproof breathable fabric

Features+Benefits

- Durable water-repellent (DWR) finish
- Black oxidized molded zipper
- Hidden reverse coil zip pockets
- Vents with hidden snaps at side seams and cuffs

CARE INSTRUCTIONS

Machine Wash Cold, Gentle Cycle. Tumble Dry Low. Cool Iron If Needed. Do Not Bleach. Do Not Dry Clean.

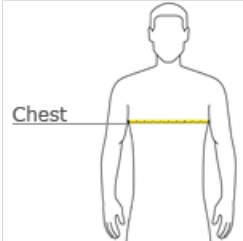


front



back

HOW TO MEASURE



CHEST WIDTH

Measure under the arm and around the fullest part of the chest with arms down, keeping tape horizontal.

SIZE CHART

	XS	S	M	L	XL	2XL	3XL	4XL
Chest	32-34	35-37	38-40	41-43	44-47	48-51	52-56	57-61

COLOR INFORMATION



Anchor Grey
PMS 426C



Deep Black
PMS Black C



Night Navy
PMS 532C