

SPEC SHEET + MEASUREMENTS

Product photo



PORT AUTHORITY.

Port Authority® Women's Long Sleeve UV Daybreak Shirt. LW960

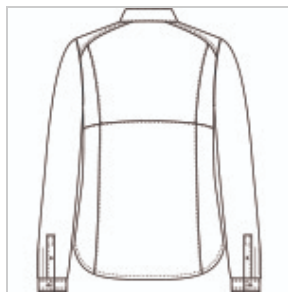
Sun and moisture are no problem for this versatile, lightweight, highly breathable shirt. Relaxed styling makes it perfect for outdoor or indoor wear.

- 2.2-ounce, 100% polyester poplin
- 2.5-ounce, 100% polyester poplin (White)
- Moisture-wicking
- UPF rating of 30
- Straight collar
- Dyed-to-match buttons
- Two chest pockets with concealment flaps and hook and loop closures
- Roll sleeves with button tabs
- Vented back panel with mesh ventilation
- Rounded hem

Sketches



front



back

CARE INSTRUCTIONS

Fasten Closures. Hook & Loop Before Washing. Do Not Wring. Machine Wash Cold Gentle Cycle With Like Colors. Only Non-Chlorine Bleach If

Needed. Fabric Softener Not Recommended.
Tumble Dry Low Remove Promptly.

Product Measurements

	XS	S	M	L	XL	XXL	3XL	4XL
Body Length at Back	26 1/4	26 3/4	27 1/4	27 3/4	28 1/4	28 3/4	29 1/4	29 3/4
Bust	19	20	21	22 1/2	24	25 1/2	27 1/2	29 1/2
Pocket Height	5	5 1/4	5 1/4	5 1/4	5 1/4	5 1/2	5 1/2	5 1/2
Pocket Width	3 3/4	4	4	4	4	4 1/4	4 1/4	4 1/4
Size	2	4/6	8/10	12/14	16/18	20/22	24/26	28/30
Sleeve Length from Center Back	31 1/2	32	32 1/2	33 1/8	33 3/4	34 3/8	34 3/4	35 1/8

Body Length at Back: Measured from high point shoulder to finished hem at back.

Bust: Measured across the chest one inch below armhole when laid flat.

Pocket Height: Measure from top to bottom at center.

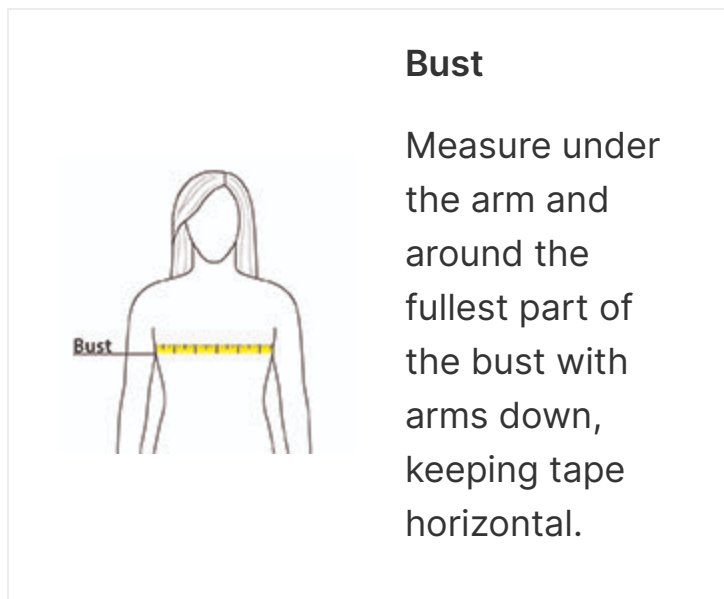
Pocket Width: Measure from side to side at top edge.

Sleeve Length from Center Back: Measure from Center Back neck to shoulder point to sleeve hem.

Size Chart

	XS	S	M	L	XL	XXL	3XL	4XL
Bust	32-34	35-36	37-38	39-41	42-44	45-47	48-51	52-55
Size	2	4/6	8/10	12/14	16/18	20/22	24/26	28/30

How To Measure



Colors

Please note: PMS code information is shown only when an exact match is available.



Bright
Seafoam
PMS 564C



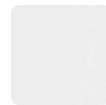
Deep Black
PMS BLACK
C



Light Blue
PMS 644C



True Navy
PMS 533C



White