



District Wash™ Fleece Crew DT2204



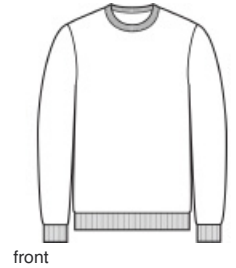
Made for a relaxed vibe, this incredibly soft, comfortable fleece is elevated by a unique vintage-inspired pigment dye for a lived-in look and feel.

- 10.9-ounce, garment-dyed 80/20 combed ring spun cotton/recycled polyester
- 100% ring spun cotton face
- 2x2 rib knit neck
- Side seamed
- 2x2 rib knit cuffs and hem
- Tear-away and reject dye label

The garment-dyeing process infuses each garment with unique character. Please allow for slight color variation in production and washing. Special consideration must also be taken when printing white ink on garment-dyed cotton.

CARE INSTRUCTIONS

Machine Wash Cold With Like Colors. Do Not Bleach.
Tumble Dry Low. Cool Iron If Necessary.

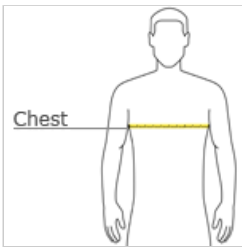


front



back

HOW TO MEASURE



CHEST WIDTH

Measure under the arm and around the fullest part of the chest with arms down, keeping tape horizontal.

SIZE CHART

	XS	S	M	L	XL	2XL	3XL	4XL
Chest	32-34	35-37	38-40	41-43	44-46	47-49	50-53	54-57

COLOR INFORMATION



Black
PMS BLACK C



Deep Steel Blue



Dusk Blue
PMS 4137C



Garnet



Graphite
PMS 7540C



Gusty Grey
PMS COOL GREY
8C



Mushroom



Olive Drab Green
PMS 7771C



True Navy
PMS 533C