

# SPEC SHEET + MEASUREMENTS

## Product photo



*Brooks Brothers*

## Brooks Brothers® Wrinkle-Free Stretch Pinpoint Spread Collar Shirt. BB18012

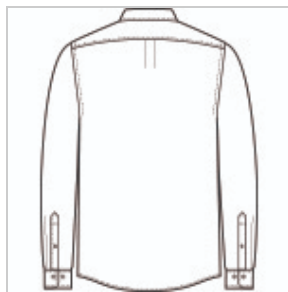
This iconic dress shirt combines a little bit of stretch with a classic spread collar for a polished look. A premium wrinkle-free treatment process means effortless style and a sharp, professional finish all day long.

- 4.4-ounce, 97/3 cotton/spandex fine yarn count
- Taped seams
- Spread collar with removable stays
- Left chest pocket
- Pearlized buttons
- Rounded, adjustable single-button cuffs

## Sketches



front



back

## Care Instructions

Machine Wash Warm With Like Colors. Only Non-Chlorine Bleach, If Needed. Tumble Dry Low,

Remove Promptly And Hang. Warm Iron, If Needed.

## Product Measurements

	XS	S	M	L	XL	2XL	3XL	4XL
<b>Body Length at Back</b>	29 1/2	30	30 1/2	31	31 1/2	32	32 1/2	33
<b>Chest</b>	19 1/2	21	22 1/2	24	26	28	30 1/2	33 1/2
<b>Sleeve Length from Center Back</b>	33 3/4	34 1/2	35 1/4	36	36 3/4	37 1/2	38 1/4	39
<b>Neck Circumference</b>	15 1/2	16	16 3/4	17 1/2	18 1/4	19	19 7/8	20 7/8
<b>Chest Pocket Height</b>	4 3/4	4 3/4	5	5	5	5	5	5 1/4
<b>Chest Pocket Width</b>	4 1/2	4 1/2	4 3/4	4 3/4	4 3/4	4 3/4	4 3/4	5

**Body Length at Back:** Measured from high point shoulder to finished hem at back.

**Chest:** Measured across the chest one inch below armhole when laid flat.

**Sleeve Length from Center Back:** Measure from Center Back neck to shoulder point to sleeve hem.

**Neck Circumference:** Measure from center of button to end of buttonhole along the center of the collar stand.

**Chest Pocket Height:** Measure from top to bottom at center.

# Size Chart

	XS	S	M	L	XL	2XL	3XL	4XL
<b>Chest</b>	32-34	35-37	38-40	41-43	44-47	48-51	52-56	57-61
<b>Neck</b>	14 ½ - 15	15 - 15 ½	15 ½ - 16	16 - 16 ½	16 ½ - 17	17 - 17 ½	17 ½ - 18	18 - 18 ½
<b>Arm</b>	30 1/2	32	34	35	36 1/2	37 1/2	38 1/2	39 1/2

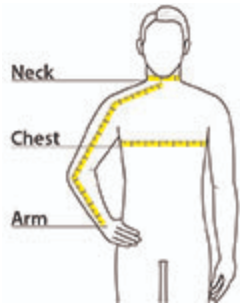
## How To Measure

## Neck

Measure around the fullest part of the neck at the base.

## Chest Width

Measure under the arm and around the fullest part of the chest with arms down, keeping tape horizontal.



## Arm

Place hand on hip. Start at the center of the back of the neck and measure across the shoulder, to the elbow, and then down to the wrist.

# Colors

**Please note: PMS code information is shown only when an exact match is available.**



Cobalt Blue



Deep Black  
PMS BLACK  
C



Newport  
Blue  
PMS 7681C



White  
PMS WHITE  
C